



EVERSAFE®

Your Solution to *FIRE SAFETY*

CORROSION RESISTANT Fire Extinguishers

**FOR EXTREME ENVIRONMENT
INSTALLATIONS**



KM 544838
KM 61549

EDITION 2019





1 **About Us:**

Eversafe Extinguisher Sdn. Bhd. incorporated in year 1979, a member of Leeden National Oxygen Ltd, Singapore. Our production of fire-fighting equipment is housed within 2.844 acres of manufacturing and R&D facilities which allows us to offer an extensive range of high-quality products and systems.

2 **Vision:**

We aim to be the global leader in the production and marketing of firefighting equipment, systems, and solutions, through the use of innovative design.



3 **Core Values:**



Quality First



Teamwork



Integrity Always



Positive Change



Safety is Our Priority



Provide Solutions



Customer Focus

4 **Quality Control:**

Manufacturing process and quality management systems have been approved to BS EN ISO 9001 by British Standards Institution.

5 **Manufacturer/Distributor of:**

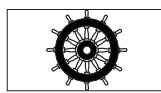
- | | | |
|--|---|--|
| ■ Portable and Mobile Fire Extinguishers | ■ Nozzle | ■ NAF S227 Fire Extinguishing System (FM200 Alternative) |
| ■ Fire Hose Reels | ■ Smoke Alarm | ■ NAF S125 Fire Extinguishing System |
| ■ Landing Valves | ■ Fire Blanket | ■ Inert Gases Fire Extinguishing System |
| ■ Breeching Inlets | ■ Canvas Hose | ■ Kerr Fire Foam Compound |
| ■ Hydrant | ■ Cabinets | ■ Wet Chemical Fire Suppression System |
| | ■ CO ₂ Fire Extinguishing System | |

6 **Product Standards/Certification/Directives:**

Our products are in compliance with the following product standards / certification bodies:

- | | |
|--|--|
| a) Australian Standard (SAI Global) | g) Marine Equipment Directive, Wheel mark (Apragaz) |
| b) European Standard (BSI) | h) Offshore Special Requirement - Sarawak Shell Bhd / Sarawak Shell Petroleum Co (SSB / SSPC) |
| c) Malaysian Standard (SIRIM / IKRAM) | i) Kuwait National Petroleum Co (KNPC) |
| d) Singapore Standard (TÜV SÜD PSB / SETSCO) | j) Kuwait Oil Company (KOC) |
| e) Construction Product Directive, CPD / CPR (BRE) | |
| f) Pressure Equipment Directive, CE mark (Lloyd's Register) | |

PRODUCT APPROVALS



An Introduction To **EVERSAFE® Portable & Mobile Corrosion Resistant Fire Extinguishers**



EVERSAFE® Corrosion Resistant Fire Extinguishers are truly an effective combination of well designed and manufactured hardware with rigid quality controlled extinguishants which make it an economical investment of your fire protection. We recommend the use of our **CR (Corrosion Resistant)** Fire Extinguishers for extreme environment installations. The extinguishers are equipped with the following special key features for maximum corrosion resistance:

- **Stainless steel squeeze lever and bottom handle**
- **Reinforced synthetic rubber hose**
- **Fully deep drawn extinguisher body from cold rolled steel**
- **Cylinder is externally coated with Epoxy Marine Paint System over sandblasted surface**
- **Galvanized metal bracket**
- **Passed salt spray test for 720 hours, 1.5 times the usual test period of 480 hours**

Type of Extinguishant:

Dry Chemical Powder (ABC)

Dry Chemical Powder (ABC) is a mixture of highly efficient mono-ammonium phosphate and ammonium sulphate ground to selected particle sizes and made resistant to influences of climate extremes by means of hydrophobing agents. It is a versatile and safe extinguishant, and is ideally suited to environment where the fire hazard is mixed. It also offers fast knockdown, protection against reignition and heat reduction. Multipurpose Dry Chemical Powder (ABC) is effective on Class A (carbonaceous) fire, Class B (flammable liquid) fire and Class C (flammable gas) fire. It is also suitable for use on live electrical fires.

Monnex Powder

Monnex powder is based on potassium bicarbonate-urea complex. Monnex is particularly effective against fire involving alcohols, ketones and esters, which are more difficult for conventional fire fighting agents. Monnex Powder is recommended for high risk situation and should be used when rapid knockdown is required on Class B and C fires. Monnex is particularly suitable for use in refineries, petrochemical complexes and other high hazard areas.

Water

Water, the most commonly used fire extinguishant for Class A fire involving carbonaceous materials such as wood, textiles and paper by cooling the fire and removing the heat needed for combustion.

Foam (AFF)

Filmfoams (AFF) are synthetic aqueous film forming foam concentrate consisting of fluorocarbon and hydrocarbon surfactants blended with various solvents, preservatives and stabilisers. The foam forms an aqueous film which helps to prevent the release of fuel vapours while the foam blanket from which the film forming liquid drains excludes oxygen from the fuel surface, extinguishing the fire and preventing re-ignition. The water content of the foam provides a cooling effect. The film forming liquid, although heavier, floats on the surface of the fuel, due to its lower surface tension. Effective on B class hydrocarbon fuel fires such as oil, petroleum, aviation fuels, and is particularly suitable where fast fire knockdown is essential. It is compatible with all dry powders. Its excellent wetting characteristics make it useful in combating Class A fire as well.

Carbon Dioxide (CO₂)

Carbon Dioxide is the ideal agent for use on Class B (flammable liquids) fires. It is non toxic, non conductive and non corrosive inert gas which works by smothering the flames and reducing the oxygen content of the air around fire. CO₂ is safe to use on live electrical fires.

Wet Chemical

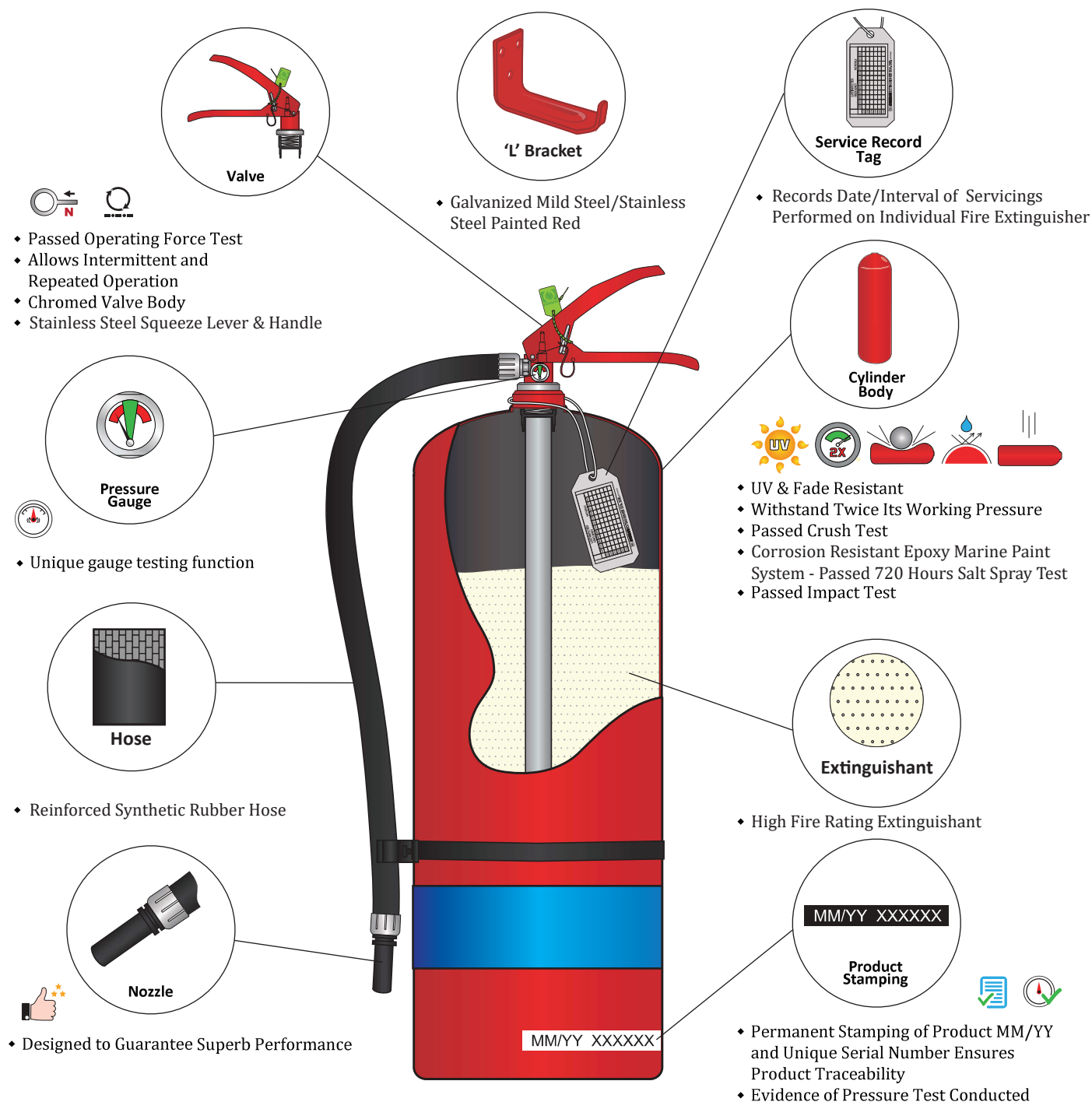
Wet Chemical, an aqueous solution, is suitable for use on Class F fire, which involves cooking oils and fats. It reacts with the burning oil or fat forming a 'blanket' which rapidly knocks the flames out, cools the burning oil and chemically reacts to form a soap-free substance, sealing the surface and preventing re-ignition.

SELECTION CHART FOR USE OF FIRE EXTINGUISHERS

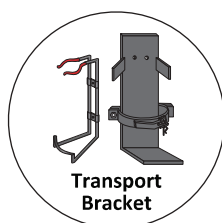
Symbol	Class Of Fire	Descriptions	ABC Powder	BC Powder	Monnex Powder	Water Spray Nozzle	Spray Foam	Foam (Branchpipe)	CO ₂	Wet Chemical
	A	Solid materials	✓			✓	✓	✓		✓
	B	Liquids or liquefiable solids	✓	✓	✓		✓	✓	✓	
	C	Gases	✓	✓	✓					
	E	Electrical Equipment	✓	✓	✓	*	*		✓	
	F	Cooking oil								✓

* Safe if in accidental contact with live electrical equipment. Comply with electrical conductivity test BS EN 3-7, Clause 9 Annex C

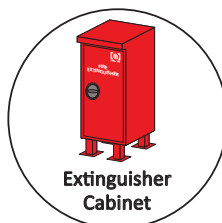
Corrosion Resistant (Stored Pressure Type) Portable Fire Extinguisher



OPTIONAL ACCESSORIES



Secures Fire Extinguisher Firmly on Vehicles with "Quick Release" Feature (for land usage)

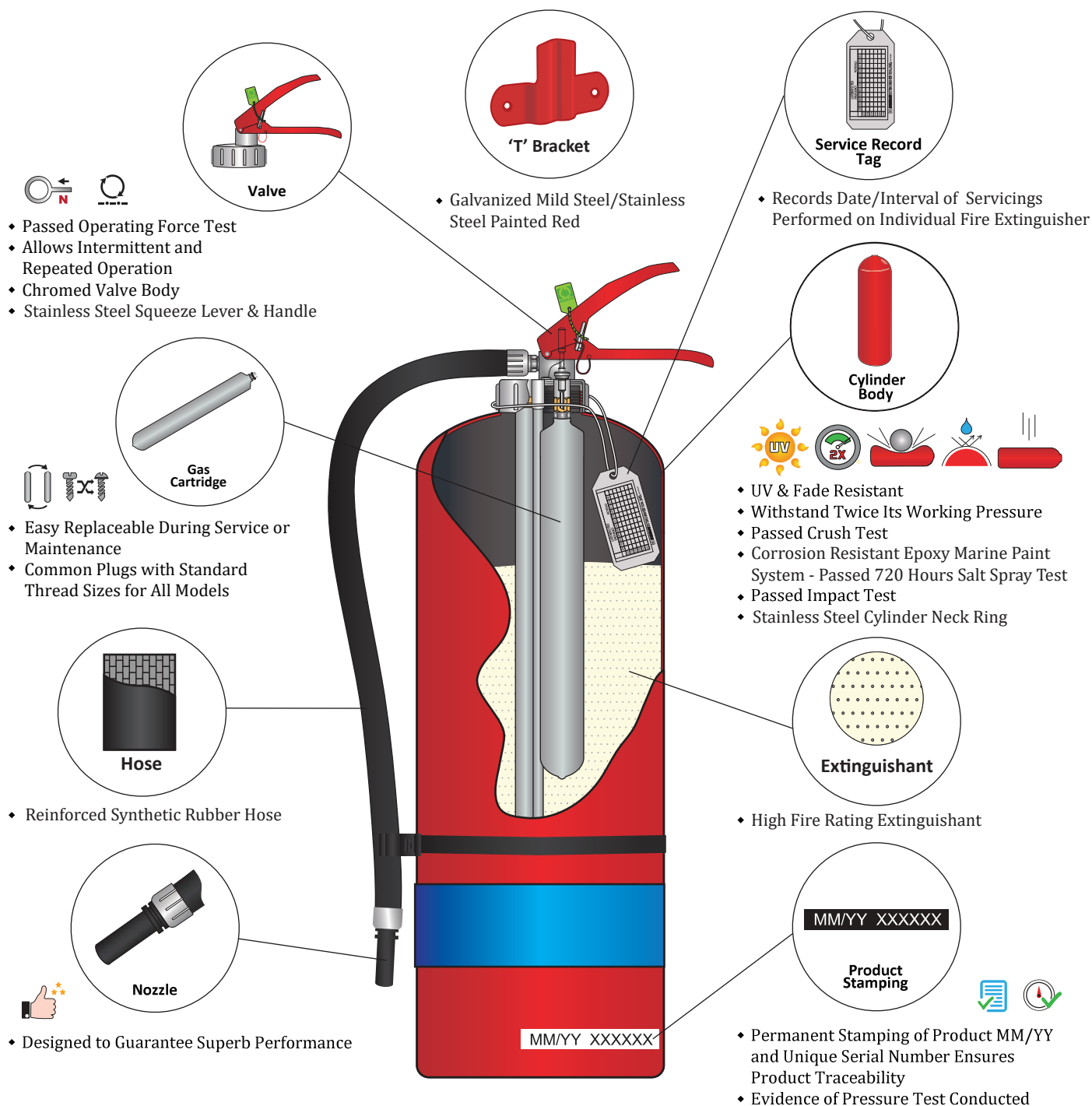


Ideal for industrial locations and areas. Protecting fire extinguishers from accidental damage, where bumps and scrapes could damage fire extinguishers.

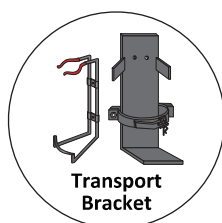


Protects Fire Extinguisher from Exposure to Extreme Environment eg. Sunlight, Seawater and etc

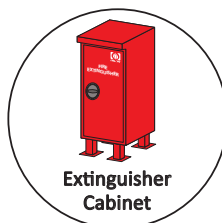
Corrosion Resistant (Cartridge Operated Type) Portable Fire Extinguisher



OPTIONAL ACCESSORIES



Secures Fire Extinguisher Firmly on Vehicles with "Quick Release" Feature (for land usage)



Ideal for industrial locations and areas. Protecting fire extinguishers from accidental damage, where bumps and scrapes could damage fire extinguishers.



Protects Fire Extinguisher from Exposure to Extreme Environment eg. Sunlight, Seawater and etc

Corrosion Resistant (Stored Pressure Type)
ABC Dry Powder Portable Fire Extinguishers - Kitemark



KM 61549



Maintenance Tag



CR-EED-3

CR-EED-4N

CR-EED-6

CR-EED-9

CR-EED-12

Model	CR-EED-3	CR-EED-4N	CR-EED-6	CR-EED-9	CR-EED-12
Type	Stored Pressure Type				
Extinguishant	ABC Dry Powder				
Capacity	3 kg	4 kg	6 kg	9 kg	12 kg
Propellant	Nitrogen (N ₂)				
Valve	Controllable Chromed Plated Brass Valve with Pressure Indicator				
Body Diameter	130 mm	158 mm	158 mm	178 mm	188 mm
Overall Height	425 mm	475 mm	525 mm	587 mm	695 mm
Approx Full Weight	5.2 kg	7.0 kg	9.4 kg	13.2 kg	17.8 kg
Working Temperature Range	-20°C to +60°C				
Working Pressure	12 bar				
Test Pressure	25 bar				
Burst Pressure	Exceeds 69 bar				
Approx Discharge Range	4 m	5 m	5 m	7 m	7 m
Approx Discharge Time	12 sec	18 sec	16 sec	18 sec	30 sec
Fire Rating	13A:89B	21A:113B	43A:233B	43A:233B	43A:233B
Fire Class	A, B, C + Electrical				
External Coating	Epoxy Marine Paint System Over Sandblasted Surface (RAL 3000) Flame Red				
Mounting	Galvanized Painted Red Metal 'L' Wall Bracket				
Maintenance Tag	Aluminium Alloy				
Manufactured & Certified to	BS EN-3				

*Other capacities available upon request

Corrosion Resistant (Cartridge Operated Type)
ABC & Monnex Powder Portable Fire Extinguishers - Kitemark



KM 61549



Maintenance Tag



CR-EED-4c

CR-EED-6c

CR-EED-9c

CR-EED-12c

CR-EED-12cMX

Model	CR-EED-4c	CR-EED-6c	CR-EED-9c	CR-EED-12c	CR-EED-12cMX
Type	Cartridge Operated Type				
Extinguishant	ABC Dry Powder				Monnex Powder
Capacity	4 kg	6 kg	9 kg	12 kg	9 kg
CO ₂ Cartridge	75 g	110 g	150 g	225 g	225 g
Valve / Headcap	Controllable Chrome Plated Brass Headcap with Safety Relief Valve				
Body Diameter	158 mm	158 mm	178 mm	188 mm	188 mm
Overall Height	480 mm	535 mm	595 mm	710 mm	710 mm
Approx Full Weight	7.9 kg	10.4 kg	14.1 kg	19.1 kg	16.4 kg
Working Temperature Range	- 20°C to + 60°C				
Working Pressure	12 bar				
Test Pressure	25 bar				
Burst Pressure	Exceeds 69 bar				
Approx Discharge Range	2 - 3 m	5 m	7 m	7 m	7 m
Approx Discharge Time	20 sec	20 sec	22 sec	31 sec	19 sec
Fire Rating	21A:89B	27A:183B	34A:233B	43A:233B	233B
Fire Class	A, B, C + Electrical				B, C + Electrical
External Coating	Epoxy Marine Paint System Over Sandblasted Surface (RAL 3000) Flame Red				
Mounting	Galvanized Painted Red Metal 'T' Wall Bracket				
Maintenance Tag	Aluminium Alloy				
Manufactured & Certified to	BS EN-3				

Corrosion Resistant (Stored Pressure Type)
AFF Foam & Water Portable Fire Extinguishers - Kitemark



KM 61549



Maintenance Tag



CR-EEF-2s

CR-EEF-6s

CR-EEF-9s

CR-EEW-6s

CR-EEW-9s

Model	CR-EEF-2s	CR-EEF-6s	CR-EEF-9s	CR-EEW-6s	CR-EEW-9s
Type	Stored Pressure Type				
Extinguishant	AFF Foam (Premix)			Water	
Capacity	2 litres	6 litres	9 litres	6 litres	9 litres
Propellant	Nitrogen (N ₂)				
Valve	Controllable Chrome Plated Brass Valve with Pressure Indicator				
Body Diameter	110 mm	158 mm	178 mm	158 mm	178 mm
Overall Height	398 mm	575 mm	625 mm	575 mm	625 mm
Approx Full Weight	3.7 kg	10.0 kg	13.8 kg	10.0 kg	13.7 kg
Working Temperature Range	+ 5°C to + 60°C				
Working Pressure	12 bar				
Test Pressure	25 bar				
Burst Pressure	Exceeds 69 bar				
Approx Discharge Range	1.5 m	4 m	6 m	4 m	6 m
Approx Discharge Time	15 sec	32 sec	57 sec	41 sec	75 sec
Fire Rating	5A:34B	13A:144B	21A:183B	13A	21A
Fire Class	A, B + Electrical Safety Test*			A + Electrical Safety Test*	
Internal Lining	Thermoplastic Powder Coating (PPA)				
External Coating	Epoxy Marine Paint System Over Sanblasted Surface (RAL 3000) Flame Red				
Mounting	Wire Bracket	Galvanized Painted Red Metal 'L' Wall Bracket			
Maintenance Tag	Aluminium Alloy				
Manufactured & Certified to	BS EN 3				

*Safe if in accidental contact with live electrical equipment. Comply with electrical conductivity test BS EN 3-7, Clause 9 Annex C

Corrosion Resistant (Cartridge Operated Type)
AFF Foam & Water Portable Fire Extinguishers - Kitemark



KM 61549



Maintenance Tag



CR-EEF-6cs

CR-EEF-9cs

CR-EEF-9c

CR-EEW-6cs

CR-EEW-9cs

Model	CR-EEF-6cs	CR-EEF-9cs	CR-EEF-9c	CR-EEW-6cs	CR-EEW-9cs
Type	Cartridge Operated Type				
Extinguishant	AFF Foam (Premix)			Water	
Capacity	6 litres	9 litres	9 litres	6 litres	9 litres
CO ₂ Cartridge	55 g	75 g	75 g	55 g	55 g
Valve / Headcap	Controllable Chrome Plated Brass Headcap with Safety Relief Valve				
Body Diameter	158 mm	178 mm	178 mm	158 mm	178 mm
Overall Height	585 mm	630 mm	630 mm	585 mm	630 mm
Approx Full Weight	11.1 kg	14.9 kg	14.9 kg	11.1 kg	14.8 kg
Working Temperature Range	+ 5°C to + 60°C				
Working Pressure	12 bar				
Test Pressure	25 bar				
Burst Pressure	Exceeds 69 bar				
Approx Discharge Range	4 m	6 m	6 m	4 m	6 m
Approx Discharge Time	58 sec	88 sec	42 sec	38 sec	49 sec
Fire Rating	13A:144B	21A:183B	13A:183B	13A	21A
Fire Class	A, B + Electrical Safety Test*		A, B	A + Electrical Safety Test*	
Internal Lining	Thermoplastic Powder Coating (PPA)				
External Coating	Epoxy Marine Paint System Over Sandblasted Surface (RAL 3000) Flame Red				
Mounting	Galvanized Painted Red Metal 'T' Wall Bracket				
Maintenance Tag	Aluminium Alloy				
Manufactured & Certified to	BS EN 3				

*Safe if in accidental contact with live electrical equipment. Comply with electrical conductivity test BS EN 3-7, Clause 9 Annex C

Corrosion Resistant (Stored Pressure Type)
Wet Chemical Portable Fire Extinguishers - Kitemark



KM 61549



Maintenance Tag



CR-EEK-2s

CR-EEK-6s

CR-EEK-9s

Model	CR-EEK-2s	CR-EEK-6s	CR-EEK-9s
Type	Stored Pressure Type		
Extinguishant	Wet Chemical		
Capacity	2 litres	6 litres	9 litres
Propellant	Nitrogen (N ₂)		
Valve	Controllable Chrome Plated Brass Valve with Pressure Indicator		
Body Diameter	110 mm	158 mm	178 mm
Overall Height **	398 mm	575 mm	625 mm
Approx Full Weight	4.6kg	13.1 kg	18.5 kg
Working Temperature Range	0°C to + 60°C		
Working Pressure	12 bar		
Test Pressure	25 bar		
Burst Pressure	Exceeds 69 bar		
Approx Discharge Range	>2 m		
Approx Discharge Time	14 sec	55 sec	90 sec
Fire Rating	5A:5F	8A:75F	13A:75F
Fire Class	A, F Safety Test*		
Internal Lining	Thermoplastic Powder Coating (PPA)		
External Coating	Epoxy Marine Paint System Over Sandblasted Surface (RAL 3000) Flame Red		
Mounting	Wire Bracket	Galvanized Painted Red Metal 'T' Wall Bracket	
Maintenance Tag	Aluminium Alloy		
Manufactured & Certified to	BS EN 3		

*Safe if in accidental contact with live electrical equipment. Comply with electrical conductivity test BS EN 3-7, Clause 9 Annex C

**Overall height measure from bottom upto valve handle

Corrosion Resistant (Cartridge Operated Type)
Wet Chemical Portable Fire Extinguishers - Kitemark



KM 61549



Maintenance Tag



CR-EEK-6cs

CR-EEK-9cs

Model	CR-EEK-6cs	CR-EEK-9cs
Type	Cartridge Operated Type	
Extinguishant	Wet Chemical	
Capacity	6 litres	9 litres
CO ₂ Cartridge	35 g	55 g
Valve / Headcap	Controllable Chrome Plated Brass Headcap with Safety Relief Valve	
Body Diameter	158 mm	178 mm
Overall Height **	585 mm	630 mm
Approx Full Weight	13.4 kg	18.7 kg
Working Temperature Range	0°C to + 60°C	
Working Pressure	12 bar	
Test Pressure	25 bar	
Burst Pressure	Exceeds 69 bar	
Approx Discharge Range	>2 m	
Approx Discharge Time	70 sec	84 sec
Fire Rating	8A:75F	13A:75F
Fire Class	A, F Safety Test*	
Internal Lining	Thermoplastic Powder Coating (PPA)	
External Coating	Epoxy Marine Paint System Over Sandblasted Surface (RAL 3000) Flame Red	
Mounting	Galvanized Painted Red Metal 'T' Wall Bracket	
Maintenance Tag	Aluminium Alloy	
Manufactured & Certified to	BS EN 3	

*Safe if in accidental contact with live electrical equipment. Comply with electrical conductivity test BS EN 3-7, Clause 9 Annex C

**Overall height measure from bottom upto valve handle

Corrosion Resistant (Stored Pressure Type)
Carbon Dioxide Portable Fire Extinguishers - Kitemark



KM 61549



Maintenance Tag



CR-EEC-2e2

CR-EEC-5e1

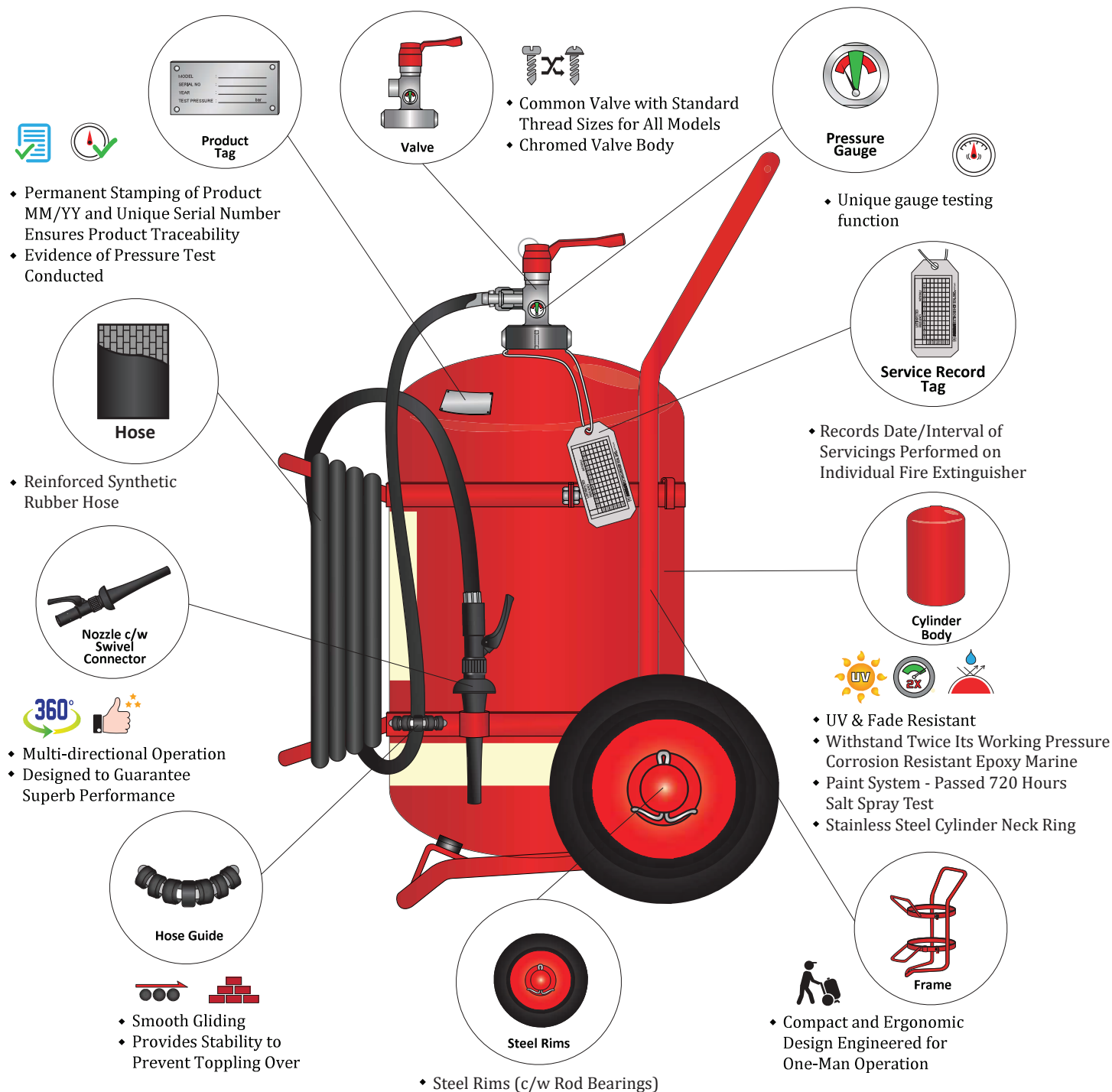
CR-EEC-2Ale2

CR-EEC-5Ale1

Model	CR-EEC-2e2	CR-EEC-5e1	CR-EEC-2Ale2	CR-EEC-5Ale1
Body Material	Cromoly Steel		Aluminium Alloy	
Extinguishant	Carbon Dioxide			
Capacity	2 kg	5 kg	2 kg	5 kg
Valve	Controllable Chrome Plated Brass Valve with Bursting Disc			
Body Diameter	105 mm	138 mm	111 mm	152 mm
Overall Height *	567 mm	747 mm	530 mm	675 mm
Approx Full Weight	6.7 kg	15.0 kg	5.5 kg	12.7 kg
Working Temperature Range	- 20°C to + 60°C			
Working Pressure	56 bar			
Test Pressure	250 bar			
Safety Disc Burst Pressure	180 - 200 bar			
Approx Discharge Range	3 m			
Approx Discharge Time	13 sec	23 sec	14 sec	24 sec
Fire Rating	34B	55B	34B	55B
Fire Class	B + Electrical			
Cylinder Specification	PED BS 5045 Part 7		PED BS 5045 Part 8	
Discharge Assembly	Swivel Horn	Hose & Fish Tail Horn	Swivel Horn	Hose & Fish Tail Horn
External Coating	Epoxy Marine Paint System Over Sandblasted Surface (RAL 3000) Flame Red			
Mounting	Galvanized Painted Red Metal 'L' Wall Bracket			
Maintenance	Aluminium Alloy			
Manufactured & Certified to	BS EN 3			

*Overall height measure from bottom upto valve handle

Corrosion Resistant (Stored Pressure Type) Mobile Fire Extinguisher



OPTIONAL ACCESSORIES

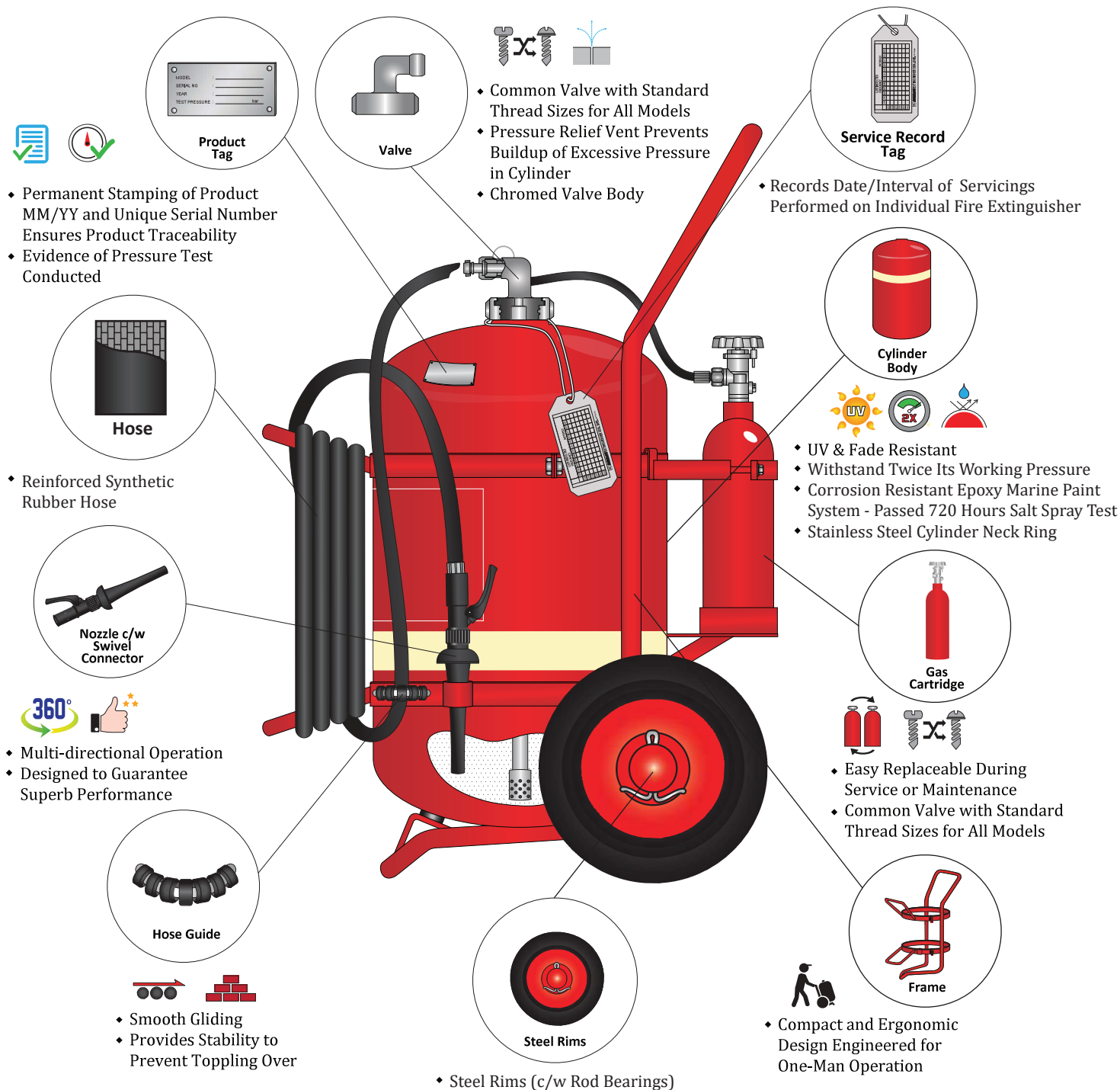


Prevents Kinking Around Bent Corners



Protects Fire Extinguisher from Exposure to Extreme Environment eg. Sunlight, Seawater and etc

Corrosion Resistant (Cartridge Operated Type) Mobile Fire Extinguisher



OPTIONAL ACCESSORIES



Prevents Kinking Around Bent Corners



Protects Fire Extinguisher from Exposure to Extreme Environment eg. Sunlight, Seawater and etc

Corrosion Resistant (Stored Pressure Type / Cartridge Operated Type)
ABC Dry Powder Mobile Fire Extinguishers - Kitemark



KM 544838



Maintenance Tag



Top View



Back View



CR-MPM-25

CR-MPM-50

CR-MPG-25

CR-MPG-50

Model	CR-MPM-25		CR-MPM-50		CR-MPG-25		CR-MPG-50	
Type	Stored Pressure Type				Gas Cartridge Type			
Extinguishant**	ABC Dry Powder							
Capacity***	25 kg		50 kg		25 kg		50 kg	
Propellant	Nitrogen (N ₂)				Carbon Dioxide (CO ₂)			
Valve / Headcap	Brass Valve with Pressure Gauge				Brass Headcap with Safety Relief Valve			
CO ₂ Cartridge	N/A				0.55 kg		1 kg	
Discharge Hose	13 mm x 6 m		16 mm x 6 m		13 mm x 6 m		16 mm x 6 m*	
Wheel Diameter	300 mm							
Cylinder Material	Steel							
Body Diameter	250 mm		386 mm		250 mm		386 mm	
Overall Height	895 mm		975 mm		895 mm		975 mm	
Overall Width	460 mm		570 mm		460 mm		570 mm	
Overall Depth	550 mm		730 mm		550 mm		730 mm	
Approx Empty Weight	22 kg		39 kg		28 kg		43 kg	
Approx Full Weight	47 kg		89 kg		53 kg		93 kg	
Working Temperature Range	- 20°C to + 60°C							
Working Pressure	12 bar							
Test Pressure	21.5 bar							
Safety Valve Lift Pressure	17 - 21 bar				18 - 20 bar			
Approx Discharge Time	48 sec		61 sec		52 sec		71 sec	
Approx Discharge Range	9 m		10 m		9 m		11 m	
Fire Rating	A IB C		A IIB C		A IB C		A IIB C	
Fire Class	A , B, C + Electrical							
External Coating	Epoxy Marine Paint System Over Sandblasted Surface (RAL 3000) Flame Red							
Maintenance Tag	Aluminium Alloy							
Manufactured & Certified to	BS EN 1866							

*10 meter hose length available upon request

**Other type of extinguishant e.g. Monnex Powder available upon request

***Other capacities available upon request

Corrosion Resistant (Stored Pressure Type)
AFF Foam Mobile Fire Extinguishers - Kitemark



KM 544838



Maintenance Tag



CR-MFM-45



CR-MFM-135

Model	CR-MFM-45	CR-MFM-135
Type	Stored Pressure Type	
Extinguishant	AFF Foam (Premix)	
Capacity**	45 litres	135 litres
Propellant	Nitrogen (N ₂)	
Valve / Headcap	Brass Valve with Pressure Gauge	
CO ₂ Cartridge	N/A	
Discharge Hose	16 mm x 6 m	19 mm x 6 m
Wheel Diameter	300 mm	350 mm
Frame Work	Steel Pipe / Flat Bar	
Cylinder Material	Steel	
Body Diameter	386 mm	454 mm
Overall Height	980 mm	1395 mm
Overall Width	565 mm	685 mm
Overall Depth	670 mm	930 mm
Approx Empty Weight	46 kg	101 kg
Approx Full Weight	91 kg	236 kg
Working Temperature Range	+ 5°C to + 60°C	
Working Pressure	12 bar	
Test Pressure	21.5 bar	22.5 bar
Safety Valve Lift Pressure	17 - 21 bar	
Approx Discharge Time	109 sec	206 sec
Approx Discharge Range	10 - 12 m	11 - 13 m
Fire Rating	A IIIB	A IVB
Fire Class	A , B	
Internal Lining	High Build Epoxy Tank Coating	
External Coating	Epoxy Marine Paint System Over Sandblasted Surface (RAL 3000) Flame Red	
Maintenance Tag	Aluminium Alloy	
Manufactured & Certified to	BS EN 1866	

*20 meter hose length available upon request

**Other capacities available upon request

Corrosion Resistant (Cartridge Operated Type)
AFF Foam Mobile Fire Extinguishers - Kitemark



KM 544838



Maintenance Tag



Top View



Back View



CR-MFG-45



CR-MFG-135



CR-MFG-150

Model	CR-MFG-45	CR-MFG-135	CR-MFG-150
Type		Gas Cartridge Type	
Extinguishant		AFF Foam (Premix)	
Capacity**	45 litres	135 litres	150 litres
Propellant		Carbon Dioxide (CO ₂)	
Valve / Headcap		Brass Headcap with Safety Relief Valve	
CO ₂ Cartridge	1 kg	2 kg	2 kg
Discharge Hose	16 mm x 6 m*	19 mm x 6 m*	19 mm x 6 m
Wheel Diameter	300 mm	350 mm	350 mm
Frame Work		Steel Pipe / Flat Bar	
Cylinder Material		Steel	
Body Diameter	386 mm	454 mm	454 mm
Overall Height	980 mm	1395 mm	1450 mm
Overall Width	565 mm	685 mm	685 mm
Overall Depth	670 mm	930 mm	930 mm
Approx Empty Weight	52 kg	108 kg	118 kg
Approx Full Weight	97 kg	243 kg	268 kg
Working Temperature Range		+ 5°C to + 60°C	
Working Pressure		12 bar	
Test Pressure	21.5 bar	22.5 bar	22.5 bar
Safety Valve Lift Pressure		18 - 20 bar	
Approx Discharge Time	162 sec	282 sec	368 sec
Approx Discharge Range	10 - 12 m	11 - 13 m	11 - 13 m
Fire Rating	A IIIB	A IVB	A IVB
Fire Class		A , B	
Internal Lining		High Build Epoxy Tank Coating	
External Coating		Epoxy Marine Paint System Over Sandblasted Surface (RAL 3000) Flame Red	
Maintenance Tag		Aluminium Alloy	
Manufactured & Certified to		BS EN 1866	

*20 meter hose length available upon request

**Other capacities available upon request

Corrosion Resistant (Stored Pressure Type)
Carbon Dioxide Mobile Fire Extinguishers - Kitemark



KM 544838



Maintenance Tag



CR-MCO-10

CR-MCO-25T

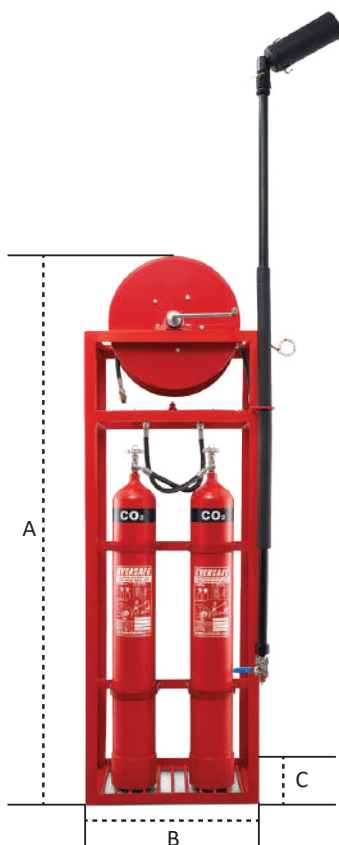
CR-MCO-20 / CR-MCO-25

CR-MCO-10T

Model	CR-MCO-10	CR-MCO-20	CR-MCO-25	CR-MCO-10T	CR-MCO-25T
Capacity**	10 kg	20 kg	25 kg	10 kg x 2	25 kg x 2
Style	Single			Twin	
Extinguishant	Carbon Dioxide (CO ₂)				
Operating Head	Pai Mark (TPED) Brass Screw Down Valve with Safety Burst Disc				
Cylinder Thread	25E				
Discharge Hose	High Pressure Hose				
Hose Internal Diameter x Length	9.5 mm x 6 m*				
Discharge Horn	Plastic with On / Off Valve				
Cylinder Specification	EN ISO 9809-1	EN 1964 Part 1 TPED		EN ISO 9809-1	EN 1964 Part 1 TPED
- Diameter	156 mm	229 mm	229 mm	156 mm	229 mm
- Nominal Height	990 mm	1210 mm	1210 mm	990 mm	1210 mm
Frame Work	Steel pipe / Flat Bar				
Overall Height	1065 mm	1210 mm	1210 mm	1040 mm	1210 mm
Overall Width	465 mm	565 mm	565 mm	515 mm	800 mm
Overall Depth	860 mm	1260 mm	1260 mm	1050 mm	1260 mm
Approx Empty Weight	33 kg	80 kg	80 kg	50 kg	123 kg
Approx Full Weight	43 kg	100 kg	105 kg	70 kg	173 kg
External Coating	Epoxy Marine Paint System Over Sanblasted Surface (RAL 3000) Flame Red				
Wheel Diameter	300 mm				
Working Temperature Range	- 20°C to + 60°C				
Working Pressure	56 bar				
Cylinder Test Pressure	250 bar				
Approx Discharge Time	53 sec	61 sec	65 sec	83 sec	97 sec
Approx Discharge Range	4 m	4 m	4 m	4 m	4 m
Fire Rating	70B	89B	89B	89B	183B
Fire Class	B + Electrical				
Maintenance Tag	Aluminium Alloy				
Designed & Manufactured to	BS EN 1866	BS EN 1866	Factory Tested	BS EN 1866	Factory Tested

*30 meter hose length available upon request

**Other capacities available upon request

CO₂ Hose Reel Unit

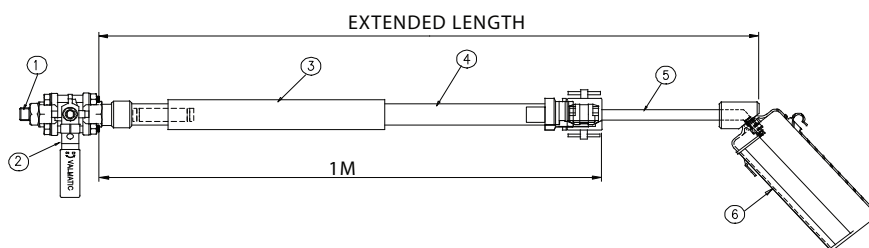
Model	CR-COHR-10T
Gas Capacity	20 kg (10 kg x 2 units)
Working Pressure	56 bar @ 20°C
Cylinder Type	Seamless Cylinder
Cylinder Material	Coromoly Steel
Cylinder Test Pressure	250 bar (3625 psi)
Cylinder Standard	EN ISO 9809-1
Cylinder Diameter (Nominal)	156 mm
Cylinder Height (Nominal)	990 mm
Discharge Valve	Brass Screw Down Valve with Safety Burst Disc
Manifold	Stainless Steel SCH 80 ASTM A106
Inlet Hose (Ø x L)	12.7 mm x 600 mm
Hose Reel Drum Material	Galvanized Mild Steel/Stainless Steel
Discharge Hose (Ø x L)	9.5 mm x 30 m
Hose Fitting	Stainless Steel
Ball Valve	Controllable ON/OFF Valve Stainless Steel 316
Application Horn	Circular Horn
Effective Discharge Time	> 75 sec (for 2 Cylinder System)
Dimension (A x B x C)	1630 mm x 600 mm x 400 mm
External Coating	Epoxy Marine Paint System Over Sandblasted Surface (RAL 3000) Flame Red

CO₂ Extendable Telescopic Lance Applicator

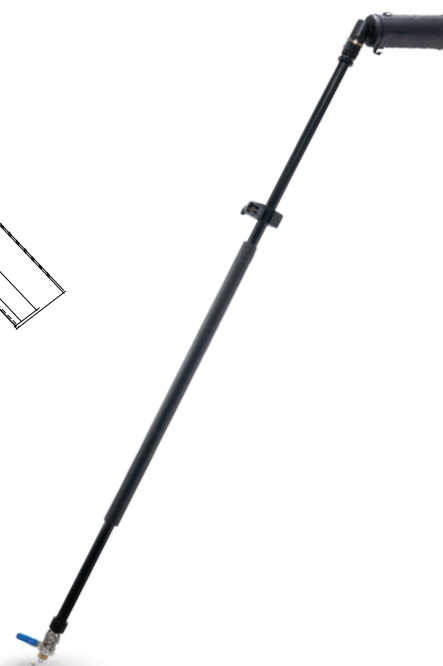
Specifications	
Closed Length	2.0 m
Extended Length	3.5 m
Working Temperature Range	- 20°C to 60°C

FEATURES

- ✓ Easy to use
- ✓ Unique discharge nozzle design
- ✓ Weather resistant
- ✓ 3.5m extended range



Item	Description	Material / Specification
1	Connector	Brass
2	Ball Valve	SS316
3	Insulation Hand Grip	Sponge (Rubber)
4	Outer Pipe	Aluminium (Anodized)
5	Inner Pipe	Aluminium (Anodized)
6	Circular Horn	PPAV 161





Gas Cartridge (TPED)

Weight (g)	External Coating	Applicable for	
35	PVC	Portable Fire Extinguisher	CR-EEK-6cs
55			CR-EEF-6cs, CR-EEW-6cs, CR-EEW-9cs, CR-EEK-9cs
75			CR-EEF-9cs, CR-EEF-9c
75	Epoxy		CR-EED-4c
110			CR-EED-6c
150			CR-EED-9c
225			CR-EED-12c, CR-EED-12cMx
550	Epoxy	Mobile Fire Extinguisher	CR-MPG-25
1000			CR-MPG-50, CR-MFG-45
2000			CR-MFG-135, CR-MFG-150



ABC Powder

EP4X Powder	
Packaging	6kg, 9kg, 12kg and 25kg
Storage	Cool and Dry Place

BC Powder

Monnex Powder	
Packaging	25kg
Storage	Cool and Dry Place



AFF Foam Compound Refills

Bottle / Drum	Applicable for
0.54L	CR-EEF-9s, CR-EEF-9c, CR-EEF-9cs
2.7L 2.7L x 3	CR-MFM-45, CR-MFG-45, CR-MFM-135, CR-MFG-135
25L	Various Usage
200L	Various Usage



Portable Fire Extinguisher Single Cabinet

Model	GRP-01S	GRP-02S	GRP-03S
Applicable for	9 kg Dry Powder	12 kg Dry Powder	5 kg Carbon Dioxide
Dimension (W) x (H) x (D)	320 mm x 866 mm x 340 mm	330 mm x 1006 mm x 350 mm	350 mm x 1046 mm x 350 mm
Body Material	Glass Fiber		
Door Material	Glass Fiber		
Finishing	Red		

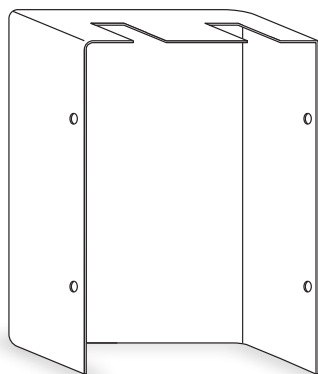
**Other sizes available upon request*



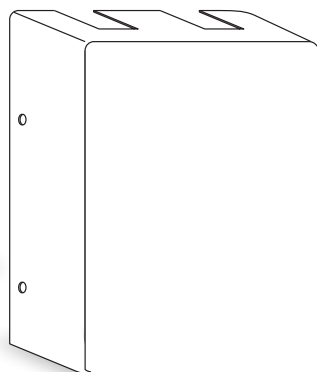
Portable Fire Extinguisher Double Cabinet

Model	GRP-01D
Applicable for	9 kg x 2
Dimension (W) x (H) x (D)	650 mm x 866 mm x 340 mm
Body Material	Glass Fiber
Door Material	Glass Fiber
Finishing	Red

**Other sizes available upon request*



Back View



Front View

Sunshield Protective Cover

Model	SCV-01D	SCV-01S
Applicable for	CR-MCO-10T	CR-MCO-20/CR-MCO-25
Dimension (W) x (H) x (D)	470 mm x 960 mm x 173 mm	370 mm x 1150 mm x 290 mm
Body Material	Glass Fiber	Glass Fiber
Finishing	White	White



Portable Fire Extinguisher Protective Covers

Model	ECV-01P
Applicable for	9 L , 9 kg, 12 kg, 5 kg, 6.8 kg
Dimension (H) x (Ø)	711 mm x 241 mm
Window	85 mm x 135 mm
Material	Waterproof Vinyl
Finishing	Red



Mobile Fire Extinguisher Protective Covers

Model	ECV-01M	ECV-02M	ECV-03M	ECV-04M
Applicable for	25 / 45 / 50 kg or L	75 kg	100 L	135 / 150 L
Dimension (mm)	550 x 800 x 850	590 x 710 x 980	650 x 1000 x 905	650 x 1000 x 1150
Top Window (mm)	150 x 150	100 x 100	150 x 200	150 x 200
Front Window (mm)	100 x 100			
Material	Waterproof Vinyl			
Finishing	Red			



Single Type

Double Type

Fire Extinguisher Stands

Model	ESS	ESD
Type	Single	Double
Body Material	Mild Steel	
Dimension (L x W x H)	330 mm x 300 mm x 725 mm	510 mm x 300 mm x 725 mm



T' Wall Bracket



'L' Wall Bracket

Wall Brackets

Model	WBTR	WBLR
Applicable for	Cartridge Operated Type	Stored Pressure Type
Material	Chrome Steel	



Front View



Back View

Heavy Duty Brackets

Model	EVB-3	EVB-9
Applicable for	2.5 kg - 3 kg Fire Extinguisher	4 kg - 12 kg Fire Extinguisher
Body & Strap Material	Mild Steel	
Design Features	Quick Release Pull Pin and Lever	



Front View



Back View

Compact Plastic Brackets

Model	CPB-01	CPB-02
Applicable for	1 kg Dry Powder	2 kg Dry Powder
Material	Plastic	

Our Global Network

EVERSAFE® products are available in more than 45 countries worldwide



EVERSAFE EXTINGUISHER SDN. BHD. (053162-V)

Lot 878, Jalan Subang 9, Taman Perindustrian Subang, 47500 Subang Jaya, Selangor Darul Ehsan, Malaysia.

+603 - 8024 9898 +603 - 8024 7878 / 9623 www.eversafe.net

info@eversafe.net / sales@eversafe.net / export@eversafe.net

www.facebook.com/eversafe.extinguisher